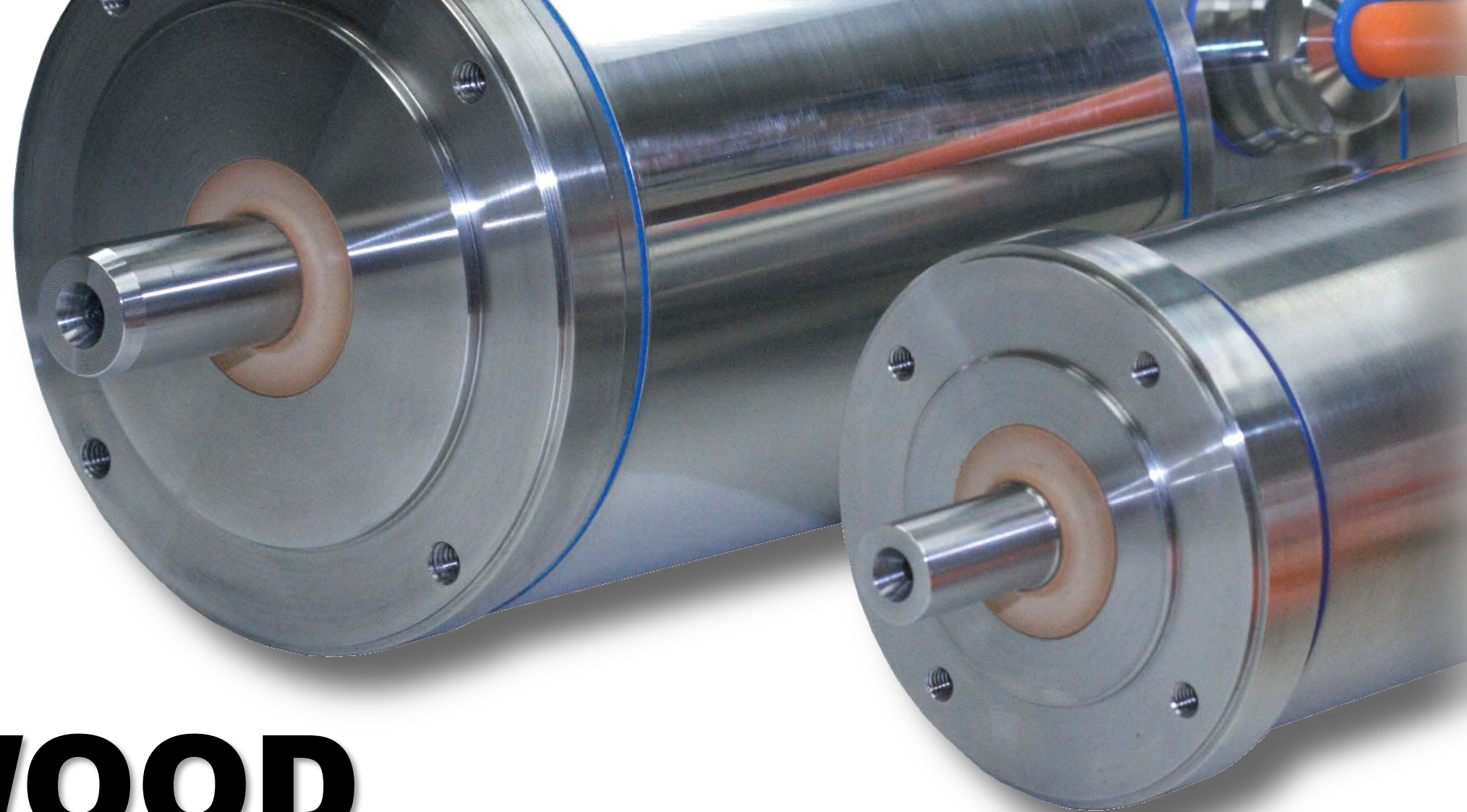


elwood.com



# **ELWOOD**

***HIGH PERFORMANCE MOTION PRODUCTS***

**ELWOOD**<sup>®</sup> **HIGH PERFORMANCE**  
**MOTORS**  
SERVOS - STEPPERS

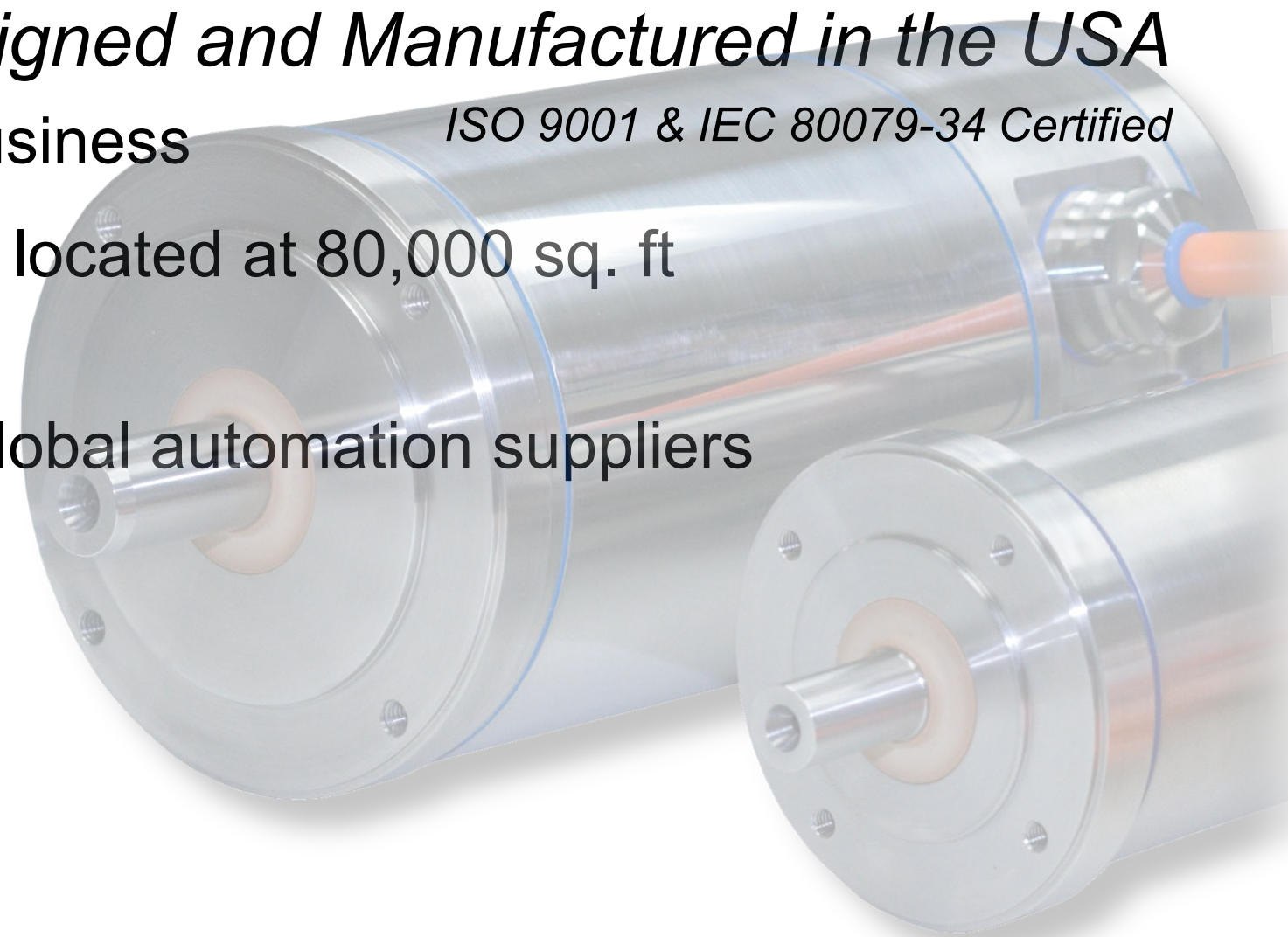
# ***HIGH PERFORMANCE MOTION PRODUCTS***



*Designed and Manufactured in the USA*

*ISO 9001 & IEC 80079-34 Certified*

- 50+ years in the motion control business
- Engineering, support & sales staff located at 80,000 sq. ft manufacturing in Racine, WI
- Partnered and supporting major global automation suppliers
  - Rockwell Automation
  - Siemens
  - Yaskawa
  - Omron
  - Mitsubishi
  - Nidec



# HIGH PERFORMANCE MOTION PRODUCTS

## EXPLOSION PROOF MOTORS

## LEGACY MOTORS

F SERIES

H & S SERIES

W SERIES

N SERIES

1326AB

1326AS

## FACTORY MODIFICATIONS

## OEM SOLUTIONS

FACTORY CUSTOMS

STAINLESS/HYGIENIC

FOOD GRADE

WASH DOWN

OPTIONS

## SERVO CABLE SETS

## CONTACTS



Enabled by  
Rockwell Automation



Technology Partner

A ROCKWELL AUTOMATION PARTNER

## ELWOOD SX-SERIES [www.elwood.com/sx](http://www.elwood.com/sx)

- Hazardous Location Rated
- Models for Gas & Dust Environments
  - North America: UL/cUL Class I, Class II
  - Europe & Worldwide: ATEX & IECEx
- 1.1 to 36Nm Continuous (stall) Torque
- Four Frame Sizes: 3.4", 4.2", 6", & 7"\*

\*7" frame size UL/cUL only



# ***HIGH PERFORMANCE MOTION PRODUCTS***

## **EXPLOSION PROOF MOTORS**

## **LEGACY MOTORS**

**F SERIES**

**H & S SERIES**

**W SERIES**

**N SERIES**

**1326AB**

**1326AS**

## **FACTORY MODIFICATIONS**

## **OEM SOLUTIONS**

**FACTORY CUSTOMS**

**STAINLESS/HYGIENIC**

**FOOD GRADE**

**WASH DOWN**

**OPTIONS**

## **SERVO CABLE SETS**

## **CONTACTS**



Enabled by  
**Rockwell Automation**



**Technology Partner**

A ROCKWELL AUTOMATION PARTNER

## **ELWOOD SX-SERIES** [www.elwood.com/sx](http://www.elwood.com/sx)

- Enabled for Rockwell Automation
- Seamless Integration w/ Kinetix & RSLogix
- Size & Select in Motion Analyzer
- Feedback Choices for ANY Drive/Control Allowing Third Party Motors:
  - Siemens, Control Techniques, Schneider, Kollmorgen, Baldor, AMC, Copley, etc.



# ***HIGH PERFORMANCE MOTION PRODUCTS***

## **EXPLOSION PROOF MOTORS**

## **LEGACY MOTORS**

**F SERIES**

**H & S SERIES**

**W SERIES**

**N SERIES**

**1326AB**

**1326AS**

## **FACTORY MODIFICATIONS**

## **OEM SOLUTIONS**

**FACTORY CUSTOMS**

**STAINLESS/HYGIENIC**

**FOOD GRADE**

**WASH DOWN**

**OPTIONS**

## **SERVO CABLE SETS**

## **CONTACTS**



**Technology Partner**

A ROCKWELL AUTOMATION PARTNER

**F, H, W, N, 1326AB, 1326AS** [www.elwood.com/rockwell](http://www.elwood.com/rockwell)

- True Drop-In Replacements for Originals:  
Rockwell, ElectroCraft, Giddings & Lewis
- Support in RSLogix & Kinetix;  
**NO** Custom Motor Files (\*.cmf) Necessary
- *Lifetime Support* from Elwood;  
**NO** Planned Obsolescence
- Popular Models Stocked



# ***HIGH PERFORMANCE MOTION PRODUCTS***

## **EXPLOSION PROOF MOTORS**

## **LEGACY MOTORS**

**F SERIES**

**H & S SERIES**

**W SERIES**

**N SERIES**

**1326AB**

**1326AS**

## **FACTORY MODIFICATIONS**

## **OEM SOLUTIONS**

**FACTORY CUSTOMS**

**STAINLESS/HYGIENIC**

**FOOD GRADE**

**WASH DOWN**

**OPTIONS**

## **SERVO CABLE SETS**

## **CONTACTS**



**Technology Partner**

A ROCKWELL AUTOMATION PARTNER

## **FACTORY MODIFICATIONS**

- MPL, MPM and VPL Series
- Updates for high shock and vibration applications
  - Installed applications at 5G – 10G+
  - Press transfer, forestry products, punching, stamping
- Original mounting & connections

# ***HIGH PERFORMANCE MOTION PRODUCTS***

## **EXPLOSION PROOF MOTORS**

## **LEGACY MOTORS**

**F SERIES**

**H & S SERIES**

**W SERIES**

**N SERIES**

**1326AB**

**1326AS**

## **FACTORY MODIFICATIONS**

## **OEM SOLUTIONS**

**FACTORY CUSTOMS**

**STAINLESS/HYGIENIC**

**FOOD GRADE**

**WASH DOWN**

**OPTIONS**

## **SERVO CABLE SETS**

## **CONTACTS**



## **OEM SOLUTIONS**

- Elwood Draws from a Long History of Success to Design Rugged Solutions for Harsh Environments and Unique Requirements
- OEM Solutions Range from Standard Products to Highly-Customized Motors Designed to Satisfy Specific Needs
- Contact Elwood Customer Service w/ Your Specs

# ***HIGH PERFORMANCE MOTION PRODUCTS***

## **EXPLOSION PROOF MOTORS**

## **LEGACY MOTORS**

**F SERIES**

**H & S SERIES**

**W SERIES**

**N SERIES**

**1326AB**

**1326AS**

## **FACTORY MODIFICATIONS**

## **OEM SOLUTIONS**

**FACTORY CUSTOMS**

**STAINLESS/HYGIENIC**

**FOOD GRADE**

**WASH DOWN**

**OPTIONS**

## **SERVO CABLE SETS**

## **CONTACTS**



## **FACTORY CUSTOMS**

- Custom Mounting, Flange, Shafts
- Custom Connectors, Cables, Terminations
- Custom Finishes:  
Anodized, Electroless Nickel, Food Grade, etc.
- Ruggedized Design for Harsh Shock/Vibration
- Sealing and Air Purge for Ingress Protection
- Feedback for ANY Drive Accepting 3<sup>rd</sup> Party Motors



# ***HIGH PERFORMANCE MOTION PRODUCTS***

**EXPLOSION PROOF MOTORS**

**LEGACY MOTORS**

**F SERIES**

**H & S SERIES**

**W SERIES**

**N SERIES**

**1326AB**

**1326AS**

**FACTORY MODIFICATIONS**

**OEM SOLUTIONS**

**FACTORY CUSTOMS**

**STAINLESS/HYGIENIC**

**FOOD GRADE**

**WASH DOWN**

**OPTIONS**

**SERVO CABLE SETS**

**CONTACTS**



## **STAINLESS/HYGIENIC**

[www.elwood.com/W-Series.html](http://www.elwood.com/W-Series.html)

- Stainless Housing and Shaft for the Best Corrosion Resistance.
  - 304SS Standard,
  - 316SS Optional
- Hygienic Design Available for Strict Requirements.
- 230V & 480V Windings
- Feedback for ANY Drive Accepting 3<sup>rd</sup> Party Motors

# ***HIGH PERFORMANCE MOTION PRODUCTS***

## **EXPLOSION PROOF MOTORS**

## **LEGACY MOTORS**

**F SERIES**

**H & S SERIES**

**W SERIES**

**N SERIES**

**1326AB**

**1326AS**

## **FACTORY MODIFICATIONS**

## **OEM SOLUTIONS**

**FACTORY CUSTOMS**

**STAINLESS/HYGIENIC**

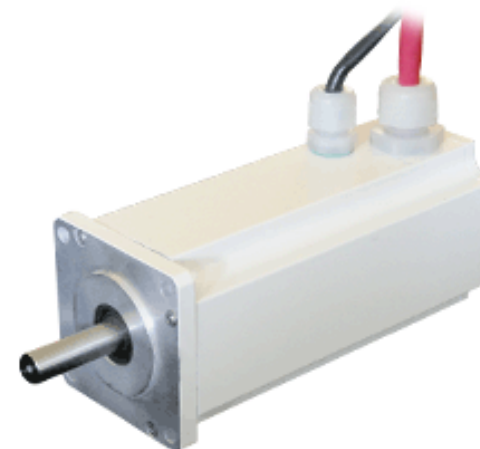
**FOOD GRADE**

**WASH DOWN**

**OPTIONS**

## **SERVO CABLE SETS**

## **CONTACTS**



## **FOOD GRADE** <http://www.elwood.com/SF-Series.html>

- Finless Housing
- FDA White Epoxy Paint
- Stainless Shaft, Teflon Seal (No Maintenance)
- Stainless Connectors (Optional)
- 0.5 to 25Nm Continuous Stall Torque
- Feedback for ANY Drive Accepting 3<sup>rd</sup> Party Motors

# ***HIGH PERFORMANCE MOTION PRODUCTS***

## **EXPLOSION PROOF MOTORS**

## **LEGACY MOTORS**

**F SERIES**

**H & S SERIES**

**W SERIES**

**N SERIES**

**1326AB**

**1326AS**

## **FACTORY MODIFICATIONS**

## **OEM SOLUTIONS**

**FACTORY CUSTOMS**

**STAINLESS/HYGIENIC**

**FOOD GRADE**

**WASH DOWN**

**OPTIONS**

## **SERVO CABLE SETS**

## **CONTACTS**



## **WASH DOWN** <http://www.elwood.com/SW-Series.html>

- 0.75 to 50Nm Continuous Stall Torque
- Designed for IP66 Environments:  
Shaft Seal (Standard), O-Ring Sealed Housings
- 230V and 480V Windings
- Feedback for ANY Drive Accepting 3<sup>rd</sup> Party Motors
- MS or M23 Connectors

# ***HIGH PERFORMANCE MOTION PRODUCTS***

## **EXPLOSION PROOF MOTORS**

## **LEGACY MOTORS**

**F SERIES**

**H & S SERIES**

**W SERIES**

**N SERIES**

**1326AB**

**1326AS**

## **FACTORY MODIFICATIONS**

## **OEM SOLUTIONS**

**FACTORY CUSTOMS**

**STAINLESS/HYGIENIC**

**FOOD GRADE**

**WASH DOWN**

**OPTIONS**

## **SERVO CABLE SETS**

## **CONTACTS**



## **OPTIONS**

- Custom Mounting/Flange, Shafts
- Spring-Set Holding Brake
- Broad Range of Feedback: Absolute (Hiperface, DSL, EnDat, BiSS), Resolvers, Incremental (Sin/Cos, TTL)
- Stainless Shafts
- Pigtail, Flying Leads
- Vented (IP68), Air Purge

# ***HIGH PERFORMANCE MOTION PRODUCTS***

## **EXPLOSION PROOF MOTORS**

## **LEGACY MOTORS**

**F SERIES**

**H & S SERIES**

**W SERIES**

**N SERIES**

**1326AB**

**1326AS**

## **FACTORY MODIFICATIONS**

## **OEM SOLUTIONS**

**FACTORY CUSTOMS**

**STAINLESS/HYGIENIC**

**FOOD GRADE**

**WASH DOWN**

**OPTIONS**

## **SERVO CABLE SETS**

## **CONTACTS**



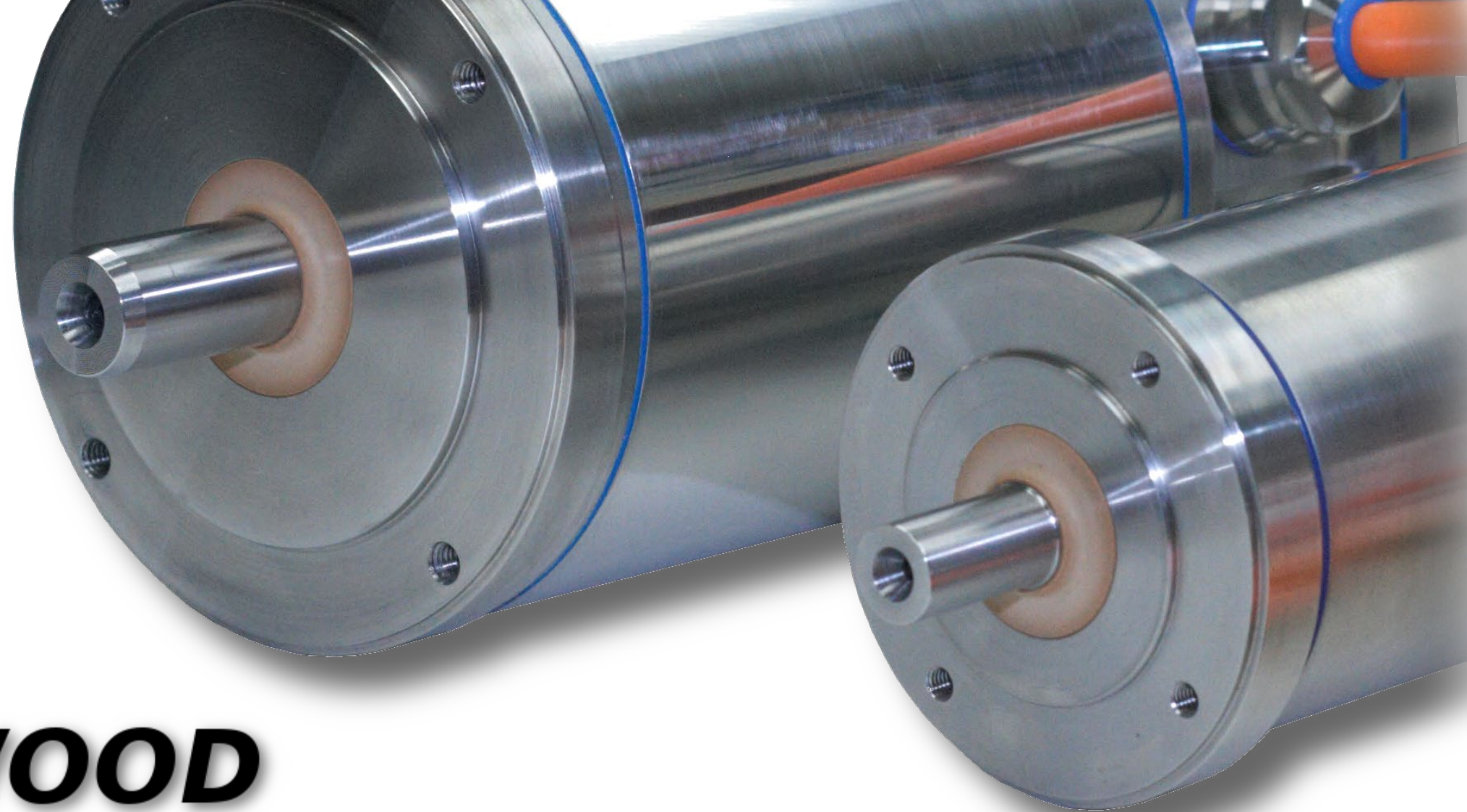
**Technology Partner**

A ROCKWELL AUTOMATION PARTNER

## **SERVO CABLE SETS**

- Shielded for EMI Protection
- Superflexible Cable Construction for Long Life in Continuous Flexing Applications
- Over-molded for Ingress Protection
- Built to Required Lengths, Reducing Scrap and Cost

elwood.com



***ELWOOD***  
***HYGIENIC SERIES SERVO MOTORS***

**ELWOOD**<sup>®</sup> HIGH PERFORMANCE  
**MOTORS**  
SERVOS - STEPPERS

# Elwood Hygienic Servo Motors

## Features

### Design:

- 316/316L stainless housing, max corrosion resistance
- No sharp inside corners
- Clean-in-place

### Finish:

- N6 (<32µin, 0.8µm)
- Improve cleaning performance & limit crevices for pathogens

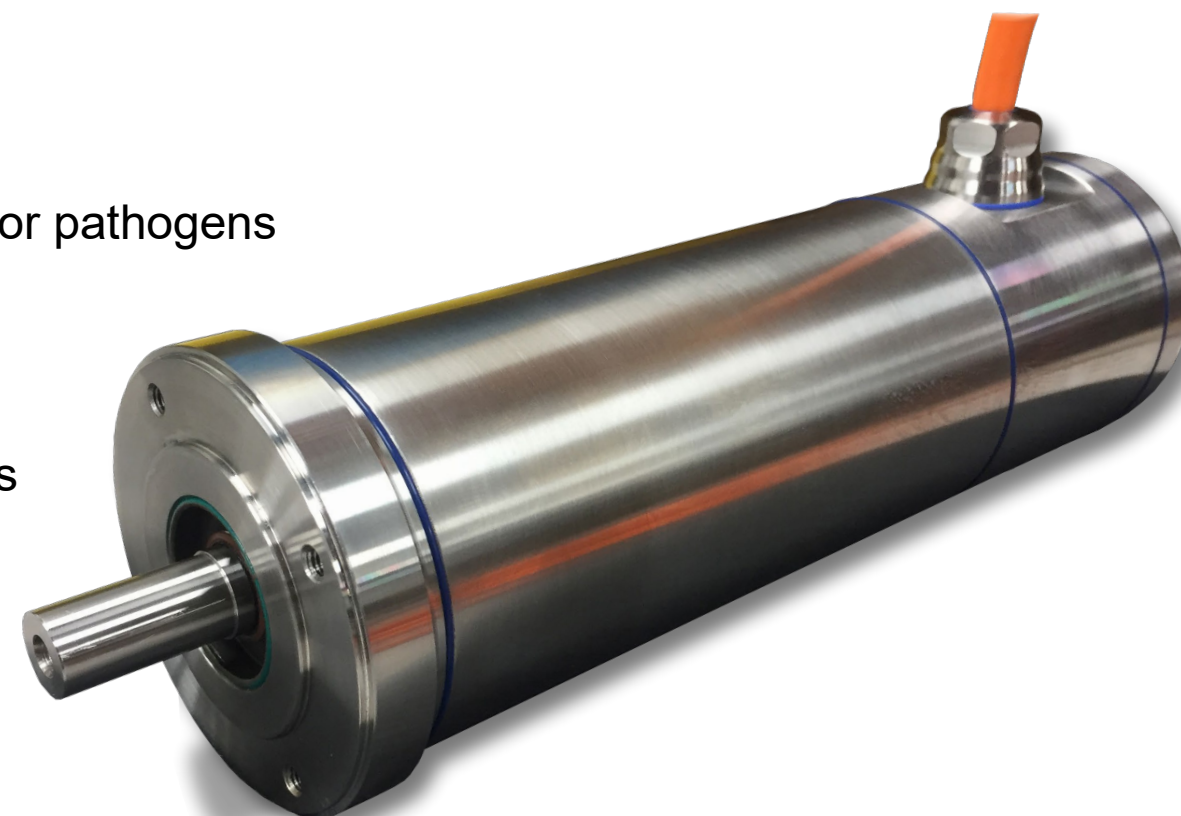
### Materials:

- Shaft and housing seals: FDA approved
- Bearings/grease: NSF H1 food grade
- Cables: resistant to standard cleaning chemicals
- Cable gland(s): hygienic grade
- Nameplate: laser burned

### Approvals

### Compliance:

- IP66 for continuous flood while in operation and complete protection against dust.
- IP69/IP69k for high pressure, high temperature while not in operation
- EHEDG, UL (cRUus), CE, RoHS
- Approvals/tests pending



# Elwood Hygienic Servo Motors

## Options

### Output:

- Torque, continuous: 1 - 22Nm
- Torque, peak: 3.8 – 50 Nm
- Power, continuous (s1): 0.4 – 4.4 KW

*(Output Projections)*

### Sizes:

- Four flange sizes: 80mm, 98mm, 113mm, 132mm
- B14 ("C" Face) standard, B5 ("D" Flange) optional

### Voltage:

- Windings for 240vac & 460vac standard

### Feedback:

- Incremental, standard: optical encoder, resolver
- Absolute, standard: Hiperface, Hiperface DSL
- Absolute, optional (extended delivery):  
EnDat 2.1 & 2.2, BiSS, Drive Cliq

### Cable:

- Single lead exit or dual-radial lead exit, standard
- Length: 5m standard, other lengths optional

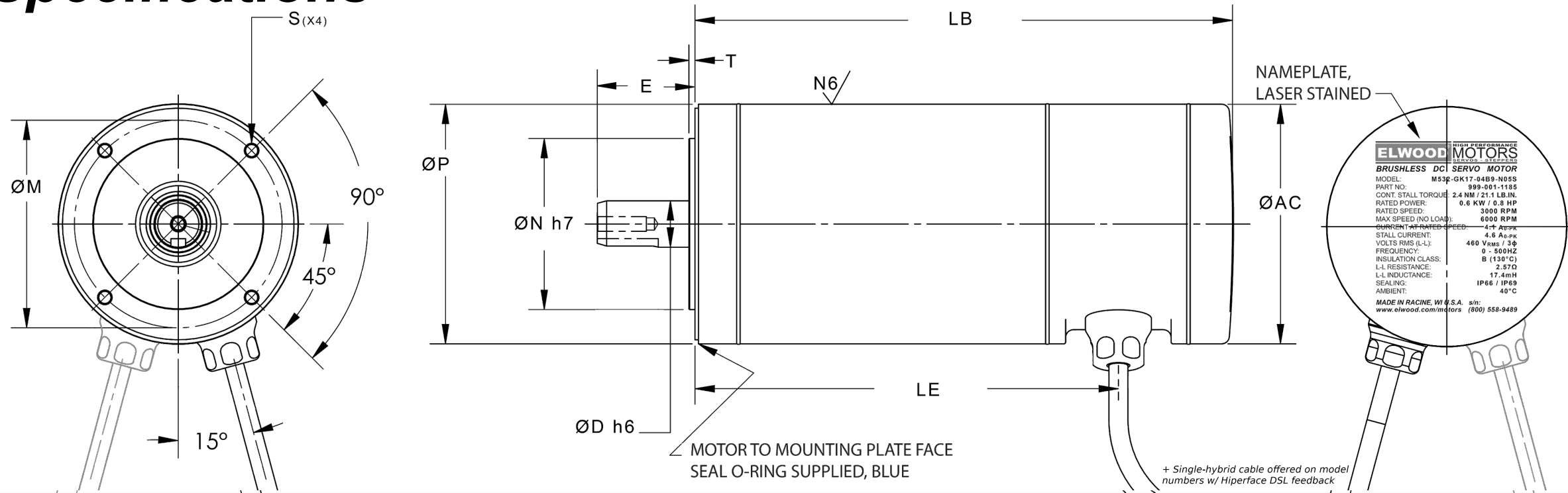
### Brake:

- Optional, spring set, holding, 24VDC coil





# Elwood Hygienic Servo Motors Specifications



Performance Data							Dimensions (mm)									
Model	Torque, Stall	Power, Cont.	Speed, Rated / Max	Torque, At Speed, Rated / Max	Torque, Peak	Inertia	Pilot Diameter	Flange Diameter	Shaft Diameter	Shaft Extension	Mounting Bolt Circle	Mounting Hole Thread	Overall Length	Length to Lead Exit	Housing Diameter	Pilot Height
	Nm	KW	RPM	Nm	Nm	kg·m <sup>2</sup>	$\varnothing N$	$\varnothing P$	$\varnothing D$	E	$\varnothing M$	S	LB	LE	$\varnothing AC$	T
M423-T	0.8	0.50	8000 / 8000	0.7 / 0.7	3.1	0.00001	40 h7	80	14 h6	30	65	M5-0.8 $\nabla$ 8	250	200	75	2.5
M522-G <sup>1</sup>	1.3	0.35	3000 / 5000	1.1 / 0.65	3.8	0.00003	40 h7	80	14 h6	30	65	M5-0.8 $\nabla$ 8	205	170	75	2.5
M532-G	2.4	0.65	3000 / 5000	1.9 / 1.2	7.2	0.00012	70 h7	98	19 h6	40	85	M6-1.0 $\nabla$ 9	220.5	173.4	98	2.5
M542-G	3.2	0.88	3000 / 4000	2.7 / 2.1	8.8	0.00027	80 h7	113	19 h6	40	100	M6-1.0 $\nabla$ 9	221.5	173.9	111	2.5
M552-G <sup>1</sup>	6.4	1.75	3000 / 5000	5.1 / 3.3	19	0.00050	95 h7	132	24 h6	50	115	M8-1.25 $\nabla$ 12	300	250	120	3.0
M562-G	10.0	2.60	3000 / 4500	8.0 / 5.5	28	0.00127	95 h7	132	24 h6	50	115	M8-1.25 $\nabla$ 12	300	250	130	3.0
M572-G	28.0	4.40	1500 / 3000	22.4 / 13.0	70	0.00775	130 h7	189	32 h6	58	165	M8-1.25 $\nabla$ 12	350	300	185	3.5

\* Projected data and dimensions, subject to change  
 \*\* Length specified for single cable and dual-radial lead exit. Add ~30mm for dual-inline lead exit



# ***HIGH PERFORMANCE MOTION PRODUCTS***

## **EXPLOSION PROOF MOTORS**

### **LEGACY MOTORS**

**F SERIES**

**H & S SERIES**

**W SERIES**

**N SERIES**

**1326AB**

**1326AS**

## **FACTORY MODIFICATIONS**

### **OEM SOLUTIONS**

**FACTORY CUSTOMS**

**STAINLESS/HYGIENIC**

**FOOD GRADE**

**WASH DOWN**

**OPTIONS**

## **SERVO CABLE SETS**

## **CONTACTS**

## **CONTACTS**

- Michael DeCore – Director of Business Development  
phone: (414) 530-5775  
email: [michael.decore@elwood.com](mailto:michael.decore@elwood.com)
- Linda Richmond – Customer Service  
phone: (262) 637-6591 x413  
email: [linda.richmond@elwood.com](mailto:linda.richmond@elwood.com)
- Brant LaVanway – Customer Service  
phone: (262) 637-6591 x474  
email: [brant.lavanway@elwood.com](mailto:brant.lavanway@elwood.com)
- Zach Borland – Engineering  
phone: (262) 637-6591 x411  
email: [zach.borland@elwood.com](mailto:zach.borland@elwood.com)
- John Hoepfner – VP & General Manager  
phone: (262) 637-6591 x495  
email: [john.hoepfner@elwood.com](mailto:john.hoepfner@elwood.com)

